

Rotary Paddle Level Indicator

Approved for dust-explosive environments
Zones 20, 21 & 22

APPLICATION

The ROTOSAFE rotary paddle switch is designed to signal the presence or absence of bulk materials such as chemical products, wood chips, grain, granules and powders. It is ideal for bunkers, hoppers and silos as well as for blockage detectors in conveyor chutes.

METHOD OF OPERATION

The detection of material is achieved by a rotating paddle. If material impedes the rotation of the paddle, the motor topples on its axle and triggers a contact. The power supply to the motor is cut and the contact signals that the critical level has been reached. When the level of the material goes down again, the motor returns to its initial position and restarts.

The ROTOSAFE has a « Failsafe » rotation detection circuit; it has a magnetic test allowing to shut the motor down.

PADDLE SELECTION

Four alternative paddles are available to detect a wide range of product from heavy to light densities.

OPTIONS

KITRTS – system allowing to have an adjustable level between 0,65 and 2,1 meters.

Detailed specification, wiring diagrams and installation/operating instructions available immediately upon request.



RTS1V0A

ATEX-approved



Ex II 1D T100°C-IP 65-ZONE 20

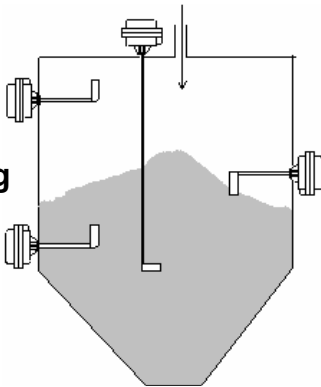
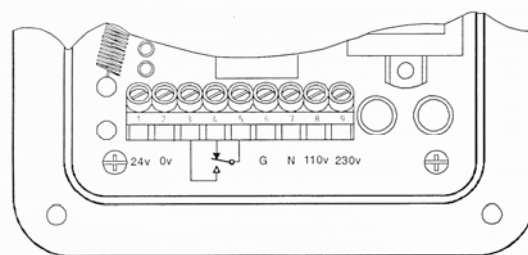
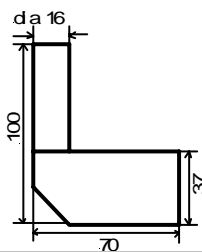


**CLASS 2 div. 1
groups E,F,G**

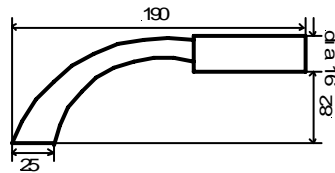
Please refer to instruction manual for correct installation .
Information subject to change or correction. July 2007.

SPECIFICATION

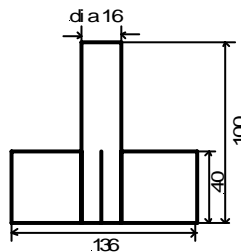
Type	RTS1V0A
Supply	24 V dc, 110/230 V ac 50/60 Hz
Consumption	1,8 VA
Ambiant temperature	-20° to + 50°C
Protection	IP 65
Enclosure	Flame retardant, glass fibre, reinforced nylon
Mounting	1¼ NPT
Conduit entry	2 conduit entries M20
Motor	1 RPM
Fuse	5 Amps
Cable length	min, 1 mm ² - max, 4 mm ²
Sensitivity	2 ranges selected via internal spring position
Switch High/Low	Desired security position (high or low level)
Standard lengths	up to 3,5 m
Output	S.P.C.O contacts, rated at 3A 250V non inductive
Output delay time	User selectable, 0-120 sec (to avoid wrong signals, e.g. in the case of dirt build-up)
Approvals	ATEX EX II 1D T100°C
Indication	1 LED for the supply - and 1 LED for the output state
Weight	0,95 Kg

Mounting

Connections

KIT RTS

RLIP1

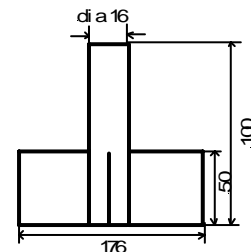
Single vane paddle
Density higher than
1120 kg/m²


RLIP2

Single vane insertable
paddle for materials
480 to 1120 kg/m²


RLIP3

3 vane paddle for
materials
480 to 1120 kg/m²


RLIP4

Large 3-vane paddle
for materials less
than 480 kg/m²

Please refer to instruction manual for correct installation.
Information subject to change or correction. July 2007.